



**S.N.D.T. Women's University**  
**Sir Vithaldas Thackersey College of Home Science**  
**(Autonomous)**



NAAC Re-accredited 'A' Grade  
UGC Honor - College with Potential for Excellence

SVT/Quotation/2019-20/509

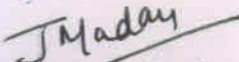
Date: 16.08.2019

SUB: Quotation for Proposed Interior Environmental Design Of Staff Room No. 100 A on First Floor under RUSA -2 Infrastructure grant at Sir Vithaldas Thackersey College of Home Science (Autonomous) SNDT Women's University, Sir Vithaldas Vidyavihar Campus, Juhu Tara Road, Santacruz (West), Mumbai.

Madam /Sir,

Sealed quotations are invited for Proposed Interior Environmental Design Of Staff Room No. 100 A on First Floor under RUSA -2 Infrastructure grant at Sir Vithaldas Thackersey College of Home Science (Autonomous) SNDT Women's University, Sir Vithaldas Vidyavihar Campus, Juhu Tara Road, Santacruz (West), Mumbai. Interested vendors are requested to submit their quote in the format given in Annexure A on company letter head. Quotation should be submitted to The Principal, Sir Vithaldas Thackersey College of Home Science (Autonomous) SNDT Women's University, Sir Vithaldas Vidyavihar Campus, Juhu Tara Road, Santacruz (West), Mumbai on or before 23<sup>rd</sup> August, 2019 (before 1.00 p.m.)

Sir Vithaldas Thackersey College of Home Science (Autonomous), SNDT Women's University, Santacruz (West), Mumbai reserves the right to reject any or all quotations without assigning any reasons thereof.

  
Dr. Jagmeet Madan  
(Principal)

(Offer should filled on letter head)  
Annexure A

To,  
The Principal,  
Sir Vithaldas Thackersey College of Home Science (Autonomous),  
SNDT Women's University,  
Juhu, Santacruz (West),  
Mumbai - 400 049.

SUB: Quotation for Proposed Interior Environmental Design Of Staff Room No. 100 A on First Floor under RUSA -2 Infrastructure grant at Sir Vithaldas Thackersey College of Home Science (Autonomous) SNDT Women's University, Sir Vithaldas Vidyavihar Campus, Juhu Tara Road, Santacruz (West), Mumbai.

Respected Sir / Madam,

With reference to subject cited above we would like to furnish our quote with best rate possible as below :

ITEM NO.	DESCRIPTION OF ITEM	QTY	RATE (in Rs.)	UNIT	AMOUNT (in Rs.)
1	Removal of door between office space & staircase lobby		P/S		1000/-
2	Providing, fabricating & fixing in position 2 1/2" thk anodized aluminium framed (1 1/2" x 2 1/2") partition with 1 1/2" x 2 1/2" wooden frame to fix 1/4" (6mm) thk approved make commercial ply, 1/24" (1mm) thk approved make & shade laminate sheet on either side etc., all complete as per design, specifications & instructions.	55 Sqft		Sqft	
3	<u>TABLES</u> a) Providing & supplying Executive table of 4'-6" x 2'-3" x 2'-6" ht fabricated out of 7/8" thk commercial ply verticals & top with TW edging out of 1" x 3/4" including approved make & shade 1/24" (1mm) thk laminate sheet on al the exposed wooden portion of table also including 14" wide x 1'-5" deep & 2'-3" high pedestal out of 3/4" thk approved make commercial ply shutters, drawers etc., 1/2" thk commercial ply apron in front etc., all complete with approved make necessary hardware, adhesive and				

Cont:1



	on edges approved shade french polish etc., all complete as per design, specifications & instructions.	1 No.		Nos.	
	b) Do-Do as above providing & supplying Staff tables size : 3'-9" x 2'-0" x 2'-6" ht but having pedestal of 1'-0" x 1'-6" x 2'-6" ht as per design, specifications & instructions.	3 Nos.		Nos.	
4	<u>CREDENZA</u> a) Providing & supplying CREDENZA size"- 4'-0" x 1'-1" x 2'-6" high fabricated out of approved make 3/4" thk commercial ply top, verticals, cottom, 1/4" thk commercial ply back etc., including fixing 1/24" (1mm) thk approved make & shade laminate sheet to all the exposed surfaces, 3/4" x 3/4" TW edging to all the verticals, horizontals, shutter edges, drawer edges, etc., finished with approved shade french polish complete including approved make necessary hardware, adhesive etc., all complete as per design, specifications & instructions.	1 No.		Nos.	
	b) Do - Do as above credenza size : 3'-0" x 1'-1" x 2'-6" high as per design, specifications & instructions	3 Nos.		Nos.	
5	<u>STORAGE UNIT BELOW HOD TABLE</u> Providing & supplying in low level & high level storage unit fabricated out of 3/4" thk commercial ply, Do-Do as above item no. 4				
	a) Low Level size: +5'-6" x 1'-3" x 2'-6" ht.	1 No.		Nos.	
	b) High level size: +5'-6" x 1'-3" x 2'-0" ht.	1 No.		Nos.	
6	Storage unit in stair lobby do-do as above size: 4'-6" x 1'-6" x 7'-0" ht	32 Sqft		Sqft	
7	<u>Wooden Band 6" Wide</u> Providing & fixing in position 1/4" x 5" band fabricated out of 3/4" thk commercial ply, 1/24" (1mm) laminate sheet fixed to the wall along the table top level all and along the wall as per instructions.	32 Rft	145/-	Rft	4,640/-
8	Bulletin board	50 Sqft		Sqft	
9	<u>BOXING FOR A.C</u> Providing & fixing in position 5'-0" x 2'-0" X 2" fixed boxing with approved make 1/2" thk commercial ply including 1/24" (1mm) thk approved make & shade laminate sheet etc. all complete as per design, specifications & instructions.	20 Sqft		Sqft	
10	Refurbishing of door & windows ( 2 Doors & 1 Window)	Lumpsum			12,000/-

Cont. 2

11	<b>PAINTING</b> Providing & applying plastic emulsion paint above oil paint upto first floor ceiling, including scrubbing, putty, primer & 3 coats of approved make & shade of paint as per as per specifications & instructions.	550 Sqft		Sqft	
12	Hardware				P/S 15,000/-
13	Miscellaneous				P/S 10,000/-
	<b>TOTAL</b>				

All the terms and conditions given in notifications are studied thoroughly and accepted fully.

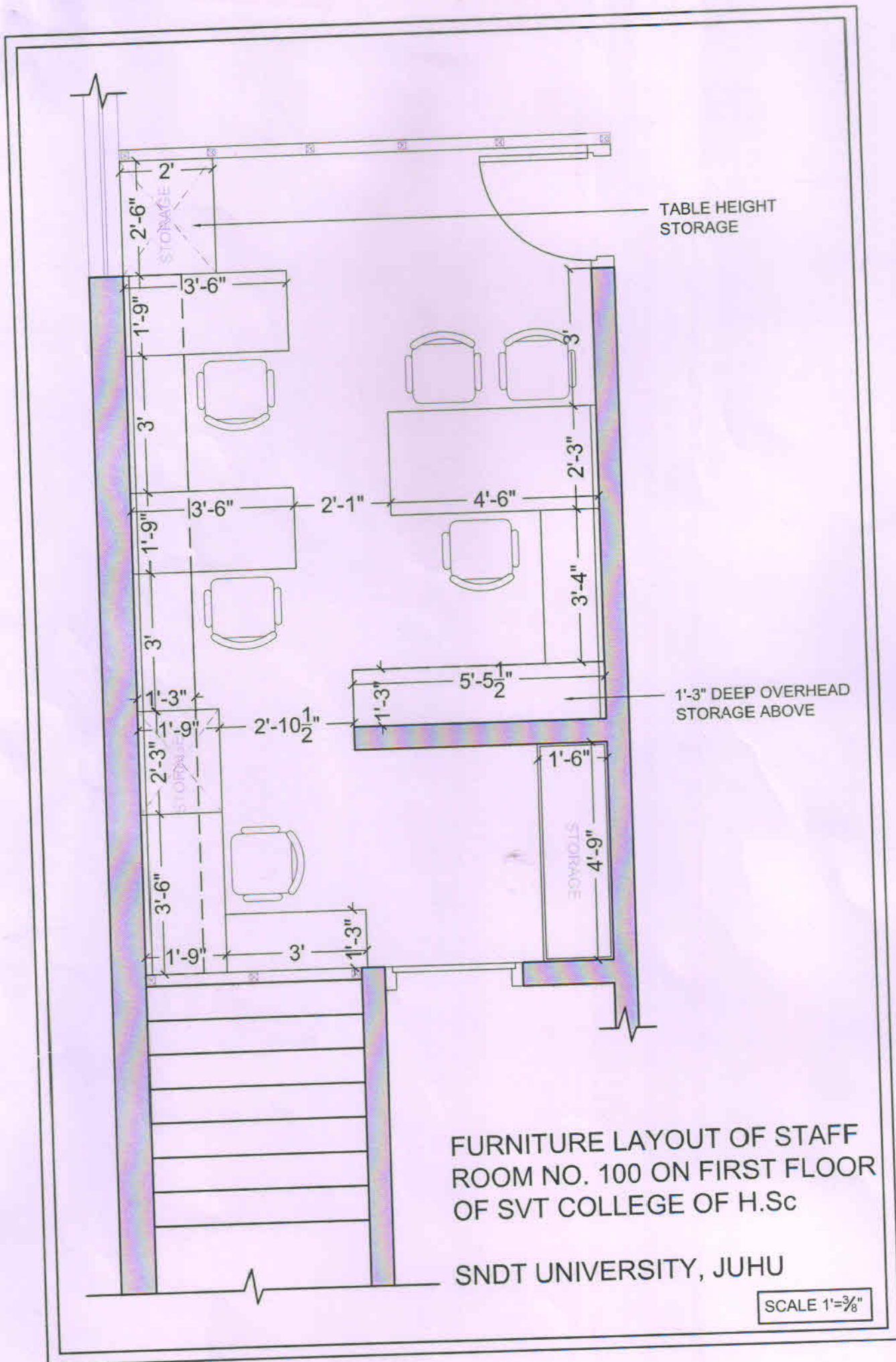
Thanking you,

Yours truly,

Name of the Company  
Signature of the Proprietor  
Date :

- Note ; Please enclose
1. Self attested GST number copy ,
  2. Self attested PAN number copy,
  3. Declaration on the company letter head if GST is not applicable.





FURNITURE LAYOUT OF STAFF ROOM NO. 100 ON FIRST FLOOR OF SVT COLLEGE OF H.Sc

SNDT UNIVERSITY, JUHU

SCALE 1' = 3/8"